

FIVE YEAR SERVICE DEVELOPMENT PLAN

Rotherham Crematorium and Municipal Cemeteries

Managed by Dignity Plc with sub-contractor Glendale, on behalf of Rotherham Council

Overview

Dignity Plc, Rotherham Metropolitan Borough Council and Glendale are committed to their working relationship and continue to collaborate in order to develop the service and bring the best possible outcomes to Rotherham Crematorium and Cemeteries.

The five year service development plan has been developed to demonstrate collective commitment to ongoing projects, future projects, and overall grounds maintenance.

Performance will be managed against this plan on a quarterly basis to review the progress of developments and it will be updated and amended where required. The more detailed plan for in year developments will run 1st of June to 31st of May, with the plan being refreshed in its entirety, annually. This will be presented at the Improving Places Select Commission each year as part of the annual Bereavement Services update, together with a Contract Management Report by the Council.

Overall Service Improvements – Dignity & RMBC Bereavement Services

In Year Service Improvements

Increased involvement with cemetery friend groups

Dignity is to be more proactively involved with the friend groups. Council currently leading on majority of these and facilitating meetings.

Involvement strategy plan has been produced by Dignity and submitted to the Council in September 2022.

Improved Customer Feedback Analysis

Dignity will utilise online survey forms to capture customer views of funeral services provided for both burials and cremations to allow for greater accessibility for service users to provide feedback. All notice boards within the cemeteries have been updated to explain how service users can undertake this.

A more holistic analysis of customer feedback to be produced in the 2022-23 Annual Performance Report. Previously only survey results shared which are not felt to give a full representation of customer satisfaction.

Produce a strategic plan for Burial Capacity to the end of the contract term

Dignity will produce a strategic 35 year plan to cover future burial land across the entire Borough by 31st March 2023.

Extension of last burial times

Improvements to services have also been introduced to assist those whose religious beliefs require a deceased persons to be buried within 24 hours of their passing. The last burial time of the day has been extended to 6.30pm during the summer and the times for other periods of year will be reviewed during the closing months of 2022. The results of this review will be shared as soon as possible.

Overall Service Improvements – Dignity & RMBC Bereavement Services

In Year Service Improvements
<p>Demolition of the old office block at East Herringthorpe and the installation of a café and florist unit Initial plans and estimated timescales to be submitted before the end of March 2023.</p>
<p>Adequate performance management of sub-contractor using KPIs specified within the Facilities Management Agreement. To be implemented by Dignity for sub-contractor Glendale by the 31st of October 2022. Updates by exception to be provided to Council in the monthly performance meetings held with Dignity after this date.</p>
<p>Improved working with faith leaders to provide reasonable adjustments and engagements during religious festivals. Dignity will establish a list of key religious festivals and dates with faith leaders and reasonable adjustments recorded to help facilitate them. This calendar has been published by both Dignity and the Council.</p>
<p>Restoration of and redrafting of cemetery plans in line with agreed proposals This work is currently being undertaken by Dignity and is on target for completion by the 31st of December 2022.</p>
<p>Digitized capture of registers to be made available on the internet in line with agreed proposals. This work is currently being undertaken by Dignity in conjunction with TownsWeb and is on target for completion by the 31st of December 2022.</p>
<p>Friends Group Guidebook RMBC Bereavement Services have produced a Friends group guidebook in conjunction with Dignity and Glendale. This is digital and available online for all established and prospective Friends groups across the Borough.</p>

Overall Service Improvements – Dignity & RMBC Bereavement Services

In Year Service Improvements

Customer Information

RMBC Bereavement Services have already improved the Council website in order to keep interested parties fully informed on matters regarding each cemetery. This includes information on Friends group meetings, significant works within the cemeteries and links to important general information about the cemetery itself such as the Commonwealth War Graves Commission.

Tree Works

Year on year in January, Glendale will assess all tree works at all cemeteries. A maintenance plan will be scheduled for each month of the year to maintain the trees. All emergency tree works will be carried out within 24 hours.

Out of hours burials fees

Dignity has reviewed its cemetery prices in Rotherham, and after consulting the Council and local community, has decided to waive the additional fee of £481 for out of hours and absorb the extra costs. Dignity also plan to refund any grave owner that has previously paid the additional weekend fee.

New equipment

Glendale have invested in new equipment to be used in maintaining cemeteries roads and footpaths and keep them clear from moss.

Cemetery notice boards

RMBC Bereavement Services have installed lockable notice boards within each cemetery which RMBC, Dignity and Friends Groups have access to in order to relay message, events and other important notices to visitors as needed. This improvement will help information reach a wider audience as many will not regularly check webpages, particularly if it is somewhere they visit often. This is being utilised at East Herringthorpe and Greasbrough Lane cemeteries currently to advise upon drainage improvements to the cemeteries.

Overall Service Improvements – Dignity & RMBC Bereavement Services

Future Improvements 2023-2027

Faith Based Events

Dignity will continue to work with faith leaders and make the reasonable adjustments required during different religious events and will arrange for events that require additional access to the cemeteries outside of normal hours for example.

Dignity's Contractual Asset Responsibilities

Dignity will undertake a survey of the assets they have responsibility for as defined in the contract within the Cemetery and provide a full report to the Council on these which includes any necessary remedial works and the relevant commencement dates of these works where appropriate. This will be completed by 31st March 2024.

Drainage Surveys

Full CCTV drainage surveys to be undertaken in all cemeteries to assess the condition of all existing drainage. This will inform Dignity of any remedial works required and enable a thorough maintenance plan to be prepared and carried out by Glendale in the course of their maintenance duties. Further CCTV drainage surveys will be undertaken periodically by Dignity to ensure all drainage systems are in full working order. This will be completed by 31st December 2024.

Customer Information

RMBC Bereavement Services have already improved the Council website in order to keep interested parties fully informed on matters regarding each cemetery. Dignity will update their own website to reflect the same information as the Council by the end of September 2023.

East Herringthorpe Crematorium and Cemetery

In Year Projects 2022-2023
Dignity have undertaken significant works within East Herringthorpe Cemetery to improve the condition of the roads and footpaths. This work commenced on 13 th of June 2022 and will be completed by the 31st of October 2022.
Dignity have undertaken significant developments within the Muslim burial section of East Herringthorpe Cemetery to improve drainage in the existing burial section. A gabion wall and 32 new burial tombs will be installed, with a further seven scheduled to be installed by early October 2022.
RMBC Bereavement Services are working in conjunction with RMBC Housing Services to improve the boundary at the top of the cemetery and to provide screening between resident's gardens and the Children's section to allow more privacy to mourners and residents alike. Works are expected to be complete by 31 st March 2023.
Glendale will create additional flower beds at the top of the cemetery near the children's section and tidy up the Fellowship area which is situated in the August section of the Gardens of Remembrance by 31 st March 2023.
Dignity will demolish the old office block and seek to install an onsite Florist and Café for visitors. Plans and timescales will be provided to the Council by the end of March 2023.
Dignity will increase engagement with the newly formed Friends group to arrange events and small-scale activities within the cemetery such as tidy up events and making bird or bat boxes and bug hotels to increase biodiversity in the cemetery. Dignity will support a minimum of four meetings or events per year.
Dignity will install improved signage to direct visitors to the car park to ensure that inappropriate parking on site is managed allowing better access to the crematorium chapel for funeral corteges.

East Herringthorpe Crematorium and Cemetery

Proposed Future Projects 2023-2027
Dignity to implement the findings of the last burial times for the winter months following the review undertaken during Autumn and Winter 2022 by 31 st July 2023.
RMBC Bereavement Services will install seating areas around the cemetery in order for people to sit and reflect when visiting a loved one's grave. This will be done in consultation with the cemetery friends' group.
Dignity will ensure that a review is undertaken of all potential burial land in other areas of East Herringthorpe and prepare this for burials or ashes interments to commence, this will be completed by 30 th September 2023.
Dignity will complete Cemetery expansion works and open the new section for burials by 31st December 2024. Planning was submitted on 30 th September 2022.
Glendale re-use most of the soil in the cemeteries, the rest of the soil and green waste is collected locally. Glendale's aim is to increase their recycling programme and create a plan of how this will be implemented by 31 st March 2024
Dignity will work with relevant Council departments and explore the suitability of installing a COVID memorial within the cemetery in conjunction with other memorials around the Borough in green spaces and other areas of interest.
Dignity will look to reinstate the old memorial building at the entrance gate as a children's area for parents to use when bringing young children to visit graves of loved ones. There would be supportive materials available to help children understand death. There are many books and leaflets that can be obtained through various charities to help bereaved children.
Dignity will commission a biodiversity survey of the Cemetery and will implement recommendations to encourage biodiversity at the cemetery.

East Herringthorpe Routine Maintenance 2022-2027

East Herringthorpe Crematorium							WINTER		SUMMER								WINTER	
Job Description	Quantity	UoM	Unit Rate	Output	Season	Indic Freq	Jan	Feb	Mar	Apr	May	Jun	Jul	Aug	Sep	Oct	Nov	Dec
RIDE ON MOW GRASS AREAS					Summer	32			3	4	4	4	4	4	4	4	1	
STRIM OBSTACLES AND GRASS EDGES					Summer	32			3	4	4	4	4	4	4	4	1	
SMEEP/ BLOW PATHS AND KERBS NEAR GRASSED AREAS					All	48	4	4	4	4	4	4	4	4	4	4	4	4
LEAF CLEARANCE GRASS AREAS					All	14	3	3	1							1	3	3
APPLY HERBICIDE SPRAY AROUND OBSTACLES					Summer	16			4		4			4		4		
LIFT LOW BRANCHES UP TO 8FT					All	1		1										
REMOVE EPICORMIC GROWTH FROM TREES					All	5	1	1	1								1	1
CULTIVATE SHRUB BEDS					Winter	16	4	4									4	4
EDGE SHRUB BEDS					Winter	16	4	4									4	4
DEAD HEAD ROSES					All													
SOFT PRUNE ROSES					All													
HARD PRUNE ROSES					All													
PRUNE VARIOUS OTHER SHRUBS					Winter	8	2	2									2	2
PRUNE INTERNAL HEDGES					All	2		1								1		
APPLY HERBICIDE SPRAY TO SHRUB BEDS AND BORDERS (SPOT SPRAY)					Winter	2	1	1										
LEAF CLEARANCE FROM SHRUB BEDS					Winter	8	2	2									2	2
HALF MOON GRASS EDGES					Winter	8	2	2									2	2
APPLY HERBICIDE SPRAY TO BUILDING LINES, PATHS, AND CAR PARKS					All	3			1			1			1			
LEAF CLEARANCE					All	11	2	2								1	4	2
CLEAR MOSS OFF PATHWAYS USING MOSS BRUSH / CHEMICAL					All	8	2	2				2					2	2
SUPPLY AND PLANT SUMMER BEDDING					Summer	2						2						
SUPPLY AND PLANT WINTER BEDDING					Summer	2										2		
GRIT HEARSE ROUTE AND TOP CAR PARK AS AND WHEN NECESSARY					Winter													
SNOW CLEAR ALL HARDSTAN DING AREAS AS AND WHEN NECESSARY					Winter													

East Herringthorpe Crematorium and Cemetery

Tree Works 2022-2023 - Work not started will be completed by April 2023
Manage deadwood on trees in the following areas;
Poplar trees Ridgeway boundary.
Cherry tree at the rear of the old office block.
Willows in F-section
Poplars in CC/DD section
Cherry's MM section
Ash on P section
Sycamore W section
2 x Ash in July section
2 x Ash in April section
Large area by March section opposite crematorium deadwood numerous trees and remove hanger from willow.
50%+ Reduction on London planes by Children's section and J/K sections.
Cherry tree with fungal growth around base and rot in removed limb. Still showing vigour in new section.
MM section by new path, remove conifer limb overhanging headstones.
W Section hanger from pine to be removed, remove dead beech, remove poplar in poor condition. remove x 2 maples by path which are causing path to raise.

East Herringthorpe Crematorium and Cemetery

Tree Works 2022-2023 – Work not started will be completed by April 2023

April section ash bough by lamp post to be reduced back.

IV section remove damaged pine.

W section remove dying sycamore.

Maltby Cemetery

In Year Projects 2022-2023
<p>Dignity have undertaken a site survey of the roads and paths within Maltby cemetery. The survey highlighted all areas of the cemetery where resurfacing repairs and improvements are required. The work to improve the condition of the roads and footpaths will commence 5th of September 2022 and is estimated to be complete by March 2023.</p>
<p>Dignity surveyed the boundary wall of Grange Lane and Maltby Cemetery. The re-pointing of the wall was completed in August 2022. The remaining works to stabilize the pillars will be completed by 31st October 2022</p>
<p>RMBC Bereavement Services have completed repairs on the welfare block within the cemetery in June 2022. This building is now functional and available for use by Friends groups, staff, and contractors. It has three sections: a storage room, a kitchenette and seating area alongside a toilet block.</p>
<p>RMBC Bereavement Services will commence works on restoring the historical lychgate into the cemetery before the end of March 2023. This will be completed by specialist contractors. Commencement dates and timescales of works will be published once the necessary steps have been undertaken to appoint an appropriate specialist contractor. It is expected that a contractor will be appointed by the end of October 2022 with a target date of 30th April for completion of the restoration date?</p>

Maltby Cemetery

Proposed Future Projects 2023-2027
<p>RMBC Bereavement Services will install seating areas around the cemetery in order for people to sit and reflect when visiting a loved one's grave. This will be done in consultation with the cemetery friends' group.</p>
<p>RMBC Bereavement Services will commence work on securing the boundaries at the rear and both the left and right sides of the Cemetery by installing a perimeter fence. This is following high incidences of unauthorized access into the cemetery from private gardens which back on to the cemetery. The target date for completion of the fence installation is 31st October 2023.</p>
<p>Dignity will become more actively involved with the Maltby Friends group and will arrange events and activities with the group throughout the year, each year, with a goal to encourage the Friends group to operate autonomously. Dignity will attend a minimum of four meetings or events of the friends group per year.</p>
<p>Dignity to work with Glendale to assess the feasibility of implementing and managing a composting and or spoil area for use by grounds maintenance staff by 31st March 2024.</p>
<p>Dignity and Glendale to assess the feasibility of recycling any waste within the cemetery at a local level and produce an appropriate plan for implementation by 31st March 2024.</p>
<p>Dignity will commission a biodiversity survey of the Cemetery and will implement recommendations to encourage biodiversity at the cemetery by 31st December 2024.</p>

Maltby Cemetery Routine Maintenance 2022-2027

Maltby Cemetery																		
Job Description	Quantity	UoM	Unit Rate	Output	Season	Indic Freq	WINTER		SUMMER								WINTER	
							Jan	Feb	Mar	Apr	May	Jun	Jul	Aug	Sep	Oct	Nov	Dec
RIDE ON MOW GRASS AREAS					Summer	16			1	2	2	2	2	2	2	2	1	
STRIM OBSTACLES AND GRASS EDGES					Summer	16			1	2	2	2	2	2	2	2	1	
SWEEP/ BLOW PATHS AND KERBS NEAR GRASSED AREAS					All	16			1	2	2	2	2	2	2	2	1	
LEAF CLEARANCE GRASS AREAS					All	6	1	1	1							1	1	1
APPLY HERBICIDE SPRAY AROUND OBSTACLES					Summer	4			1		1			1		1		
LIFT LOW BRANCHES UP TO 8FT					All	1		1										
REMOVE EPICORMIC GROWTH FROM TREES					All	1			1									
CULTIVATE SHRUB BEDS					Winter													
EDGE SHRUB BEDS					Winter													
DEAD HEAD ROSES					All													
SOFT PRUNE ROSES					All													
HARD PRUNE ROSES					All													
PRUNE VARIOUS OTHER SHRUBS					Winter													
PRUNE INTERNAL HEDGES					All	2		1							1			
APPLY HERBICIDE SPRAY TO SHRUB BEDS AND BORDERS (SPOT SPRAY)					Winter													
LEAF CLEARANCE FROM SHRUB BEDS					Winter													
HALF MOON GRASS EDGES					Winter	2												2
APPLY HERBICIDE SPRAY TO BUILDING LINES, PATHS, AND CAR PARKS					All	3			1			1			1			
LEAF CLEARANCE					All	4		2								1		1
CLEAR MOSS OFF PATHWAYS USING MOSS BRUSH / CHEMICAL					All	3		1				1					1	
SUPPLY AND PLANT SUMMER BEDDING					Summer													
SUPPLY AND PLANT WINTER BEDDING					Summer													
GRIT HEARSE ROUTE AND TOP CAR PARK AS AND WHEN NECESSARY					Winter													
SNOW CLEAR ALL HARDSTAN DING AREAS AS AND WHEN NECESSARY					Winter													

Maltby Cemetery

Tree Works 2022-2023 - Works all complete

Section C, side of 34 grange lane holly/birch/cherry to be removed, lift ash over garden, lift cherry over road to 5m.

Section A, to prune away and lift sycamore overhanging polytunnel from No 17

Ash overhanging an adjacent, property to be pruned away (large limb) by approx. 4 metres

Section B, clear lighting column of maple.

Remove ash with low vigour.

Moorgate Cemetery

In Year Projects 2022-2023
<p>Dignity have undertaken a site survey of the roads and paths within Moorgate cemetery. The survey highlighted all areas of the cemetery where resurfacing repairs and improvements are required. The commencement of the work to improve the condition of the roads and footpaths will be scheduled and timescales and dates will be published once these have been established.</p>
<p>In July 2022 - Dignity, RMBC Bereavement Services and Glendale visited the cemetery to identify which pathways will be left as 'green pathways' at Moorgate cemetery. Dignity are undertaking updates to the cemetery maps to reflect those remaining as green pathways and those which will be re-instated.</p>
<p>Dignity and Glendale will work with the Friends group to identified headstones that have fallen face down and need to be turned over. Dignity and Glendale will then turn these over wherever possible.</p>
<p>Dignity will continue to work with the Friends group to improve the relationship and encourage cohesive working between all parties through different events and activities undertaken within the cemetery. Dignity will, as part of this undertaking, continue working with the Council's reparation service who will attend Friends sessions with young offenders.</p>
<p>RMBC Bereavement Services have instructed a contractor to cut back and remove ivy from the Obelisk and adjacent stone details to front boundary wall on corner adjoining 2 Woodfield Villas. The commencement date of these works will be published on the Council website once established.</p>
<p>RMBC Bereavement Services will continue investigating funding, uses and restoration opportunities for the Cemetery Chapel. The progress on this will be updated annually to the Improving Places Select Committee in the Annual Bereavement Services update report.</p>

Moorgate Cemetery

Proposed Future Projects 2023-2027
Dignity will commission a biodiversity survey of the Cemetery and will implement recommendations to encourage biodiversity at the cemetery.
Dignity will work with English Heritage regarding grade 2 listing of the Cemetery and gain a greater understanding of what significance that holds and identify any works to further enhance the Cemetery.
RMBC Bereavement Services will install seating areas around the cemetery in order for people to sit and reflect when visiting a loved one's grave. This will be done in consultation with the cemetery friends' group.
Dignity will undertake a survey of the assets they have responsibility for as defined in the contract within the Cemetery and provide a full report to the Council on these which includes any necessary remedial works and the relevant commencement dates of these works where appropriate.
Glendale will, on behalf of Dignity, tidy up the triangular shrub/planting beds around the Cemetery and maintain effectively to ensure these are always kept to a high standard.
Dignity and Glendale to assess the feasibility of recycling any waste within the cemetery at a local level and produce an appropriate plan for implementation by 31 st March 2024.
Dignity to work with Glendale to assess the feasibility of implementing and managing a composting and or spoil area for use by grounds maintenance staff by 31 st March 2024.
Commonwealth war graves to be commemorated as at other cemeteries on key dates such as VE Day and Remembrance Day

Maltby Cemetery Routine Maintenance 2022-2027

Moorgate Cemetery																		
Job Description	Quantity	UoM	Unit Rate	Output	Season	Indic Freq	WINTER		SUMMER								WINTER	
							Jan	Feb	Mar	Apr	May	Jun	Jul	Aug	Sep	Oct	Nov	Dec
RIDE ON MOW GRASS AREAS					Summer	16			1	2	2	2	2	2	2	2	1	
STRIM OBSTACLES AND GRASS EDGES					Summer	16			1	2	2	2	2	2	2	2	1	
SWEEP/ BLOW PATHS AND KERBS NEAR GRASSED AREAS					Summer	16			1	2	2	2	2	2	2	2	1	
LEAF CLEARANCE GRASS AREAS					All	6	1	1	1							1	1	1
APPLY HERBICIDE SPRAY AROUND OBSTACLES					Summer	4			1		1			1		1		
LIFT LOW BRANCHES UP TO 8FT					Winter	1		1										
REMOVE EPICORMIC GROWTH FROM TREES					Summer	1			1									
CULTIVATE SHRUB BEDS					Winter	1		1										
EDGE SHRUB BEDS					Winter													
DEAD HEAD ROSES					All													
SOFT PRUNE ROSES					All													
HARD PRUNE ROSES					All													
PRUNE VARIOUS OTHER SHRUBS					Winter	1		1										
PRUNE INTERNAL HEDGES					All													
APPLY HERBICIDE SPRAY TO SHRUB BEDS AND BORDERS (SPOT SPRAY)					Winter	1		1										
LEAF CLEARANCE FROM SHRUB BEDS					Winter	1		1										
HALF MOON GRASS EDGES					Winter	2		2										
APPLY HERBICIDE SPRAY TO BUILDING LINES, PATHS, AND CAR PARKS					All	3			1			1			1			
LEAF CLEARANCE					All	5		1								1	1	
CLEAR MOSS OFF PATHWAYS USING MOSS BRUSH / CHEMICAL					All	3		1				1					1	
SUPPLY AND PLANT SUMMER BEDDING					All													
SUPPLY AND PLANT WINTER BEDDING					All													
GRIT HEARSE ROUTE AND TOP CAR PARK AS AND WHEN NECESSARY					Winter													
SNOW CLEAR ALL HARDSTAN DING AREAS AS AND WHEN NECESSARY					Winter													

Moorgate Cemetery

Tree Works 2022-2023 - Work not started to be completed by April 2023

Glendale grounds maintenance will maintain shrubs and hedges through the routine maintenance programme.

Sections C,B & A - 5th new - removal of epicormics growth from stems/sever ivy on lime trees. Section G - 2nd new remove dead tree (no planning app required). Section P - 2nd new -strip new ivy growth from wall. Section E - 1st new - deadwood beech tree. Section H - 4th new lift 2 bird cherry trees.

Haugh Road Cemetery, Rawmarsh

In Year Projects 2022-2023
<p>Dignity have undertaken a site survey of the roads and paths within Haugh Road cemetery. The survey highlighted all areas of the cemetery where resurfacing repairs and improvements are required. The commencement of the work to improve the condition of the roads and footpaths will be scheduled and timescales and dates will be published once these have been established.</p>
<p>In July 2022 - Dignity, RMBC Bereavement Services and Glendale visited the cemetery to identify which pathways will be left as 'green pathways' at Haugh Road cemetery. Dignity are undertaking updates to the cemetery maps to reflect those remaining as green pathways and those which will be re-instated. Glendale will re-seed these to create an improved look in keeping with the rest of the green areas within the cemetery.</p>
<p>RMBC Bereavement Services will undertake repairs to the railings at the top and bottom entrances of the cemetery which will reinstate missing railings and improve the security of the cemetery. As part of these works the railings will have all ivy removed and receive a full refresh of the paintwork.</p>
<p>By the end of March 2023 Dignity will be more involved with the Rawmarsh Friends group to improve the working relationship and encourage cohesive working between all parties through different events and activities undertaken within the cemeteries. The aim is for Friends groups to become autonomous.</p>
<p>Dignity and Glendale are to work with the neighbouring school to add mesh to the boundary fences between the school and the cemetery to help manage the high levels of litter entering the cemetery along this boundary.</p>

Haugh Road Cemetery, Rawmarsh

Proposed Future Projects 2023-2027
<p>RMBC Bereavement Services will continue investigating funding, uses and restoration opportunities for the Cemetery Chapel. The progress on this will be updated annually to the Improving Places Select Committee in the Annual Bereavement Services update report.</p>
<p>Dignity will commission a biodiversity survey of the Cemetery and will implement recommendations to encourage biodiversity at the cemetery.</p>
<p>RMBC Bereavement Services will install seating areas around the cemetery in order for people to sit and reflect when visiting a loved one's grave. This will be done in consultation with the cemetery friends' group.</p>
<p>RMBC Bereavement Services will continue to maintain the chapel building within the cemetery whilst work is undertaken to assess options, feasibility, and different funding options to bring the chapel back into use.</p>
<p>Dignity to assess the bottom corner of the cemetery, which is currently unused, for potential for future burial or ashes interments alongside a communal seating area or memorial feature.</p>
<p>Dignity and Glendale to assess the feasibility of recycling any waste within the cemetery at a local level and produce an appropriate plan for implementation by 31st March 2024.</p>
<p>Dignity to work with Glendale to assess the feasibility of implementing and managing a composting and or spoil area for use by grounds maintenance staff by 31st March 2024.</p>

Haugh Road Cemetery, Rawmarsh Routine Maintenance 2022-2027

Haugh Road Cemetery																			
Job Description	Quantity	UoM	Unit Rate	Output	Season	Indic Freq	WINTER		SUMMER								WINTER		
							Jan	Feb	Mar	Apr	May	Jun	Jul	Aug	Sep	Oct	Nov	Dec	
RIDE ON MOW GRASS AREAS					Summer	16			1	2	2	2	2	2	2	2	2	1	
STRIM OBSTACLES AND GRASS EDGES					Summer	16			1	2	2	2	2	2	2	2	2	1	
SWEEP/ BLOW PATHS AND KERBS NEAR GRASSED AREAS					Summer	16			1	2	2	2	2	2	2	2	2	1	
LEAF CLEARANCE GRASS AREAS					All	6	1	1	1								1	1	1
APPLY HERBICIDE SPRAY AROUND OBSTACLES					Summer	4			1		1			1			1		
LIFT LOW BRANCHES UP TO 8FT					Winter	1		1											
REMOVE EPICORMIC GROWTH FROM TREES					Winter	1		1											
CULTIVATE SHRUB BEDS					Winter														
EDGE SHRUB BEDS					Winter														
DEAD HEAD ROSES					All														
SOFT PRUNE ROSES					All														
HARD PRUNE ROSES					All														
PRUNE VARIOUS OTHER SHRUBS					Winter														
PRUNE INTERNAL HEDGES					All	2				1						1			
APPLY HERBICIDE SPRAY TO SHRUB BEDS AND BORDERS (SPOT SPRAY)					Winter	1		1											
LEAF CLEARANCE FROM SHRUB BEDS					Winter														
HALF MOON GRASS EDGES					Winter	2	1												1
APPLY HERBICIDE SPRAY TO BUILDING LINES, PATHS, AND CAR PARKS					All	3			1			1			1				
LEAF CLEARANCE					All	3											1	1	1
CLEAR MOSS OFF PATHWAYS USING MOSS BRUSH / CHEMICAL					All	3		1				1							1
SUPPLY AND PLANT SUMMER BEDDING					All														
SUPPLY AND PLANT WINTER BEDDING					All														
GRIT HEARSE ROUTE AND TOP CAR PARK AS AND WHEN NECESSARY					Winter														
SNOW CLEAR ALL HARDSTAN DING AREAS AS AND WHEN NECESSARY					Winter														

Haugh Road Cemetery, Rawmarsh

Tree Works 2022-2023 – Work not yet started to be completed by April 2023
Manage deadwood on trees in the following areas;
A section, by main drive, x 5 sycamores and ash by school fence
B section remove horse chestnut with dead crown, remove sycamore by drive
Remove from sycamore near chapel
D/G section x 6 poplars by drive
I section x 2 sycamore
Cherry over drive, near the entrance to have branches lifted
Remove hanger from sycamore near chapel
C section, monitor large ash tree.
E section remove Robinia by yew tree
J section sever ivy x 5

Greasbrough Lane Cemetery, Rawmarsh

In Year Projects 2022-2023
<p>In 2020 Dignity created a new temporary footpath at Greasbrough Lane cemetery to help rectify the damp ground conditions. This was only ever intended as a short-term solution, with a more substantial and permanent path planned to replace it. Work will commence on the path in quarter four and will be completed within the same period.</p>
<p>Dignity have undertaken a site survey of the roads and paths within Greasbrough Lane cemetery. The survey highlighted all areas of the cemetery where resurfacing repairs and improvements are required. The commencement of the work to improve the condition of the roads and footpaths will be scheduled and timescales and dates will be published once these have been established.</p>
<p>Dignity have completed a site survey to improve the drainage system at Greasbrough Lane cemetery. Plans have been drawn up following this survey and works to implement a new drainage system will commence on 5th October 2022. It is important for these works to become operational prior to extended periods of inclement weather through the Autumn and Winter period where historically it has made the cemetery quite inaccessible. The works are estimated to be completed by December 2022.</p>
<p>By the end of March 2023 Dignity will be more involved with the Rawmarsh Friends group to improve the working relationship and encourage cohesive working between all parties through different events and activities undertaken within the cemeteries. The aim is for Friends groups to become autonomous.</p>
<p>RMBC Bereavement Services will undertake works to both sets of main gates to refresh paintwork by 31st March 2023.</p>

Greasbrough Lane Cemetery, Rawmarsh

Proposed Future Projects 2023-2027
<p>Environmentally Friendly Burial Section to be introduced at Greasbrough Lane Cemetery. Dignity to undertake a public consultation event, showing samples of memorials that would be available and artists impressions of what the site would look like when developed by 31st December 2023.</p>
<p>RMBC have responsibility for the boundary line along the top of the cemetery. A fence is to be installed to improve security in the cemetery by 31st March 2024.</p>
<p>With the installation of the environmentally friendly burial area and as the Cemetery becomes busier with more burials taking place, an increase in visitors to the cemetery is expected, therefore Dignity will look to improve the parking facilities in line with other developments in the cemetery by 31st December 2023.</p>
<p>Dignity and Glendale to consider the tree coppice area and how that area could be better maintained or used. Consider planting more trees, wildflowers, and perhaps some communal seating. All works to be done with the final vision in mind to make the area more practical for maintenance, more aesthetically pleasing and increase the biodiversity of the Cemetery by 31st March 2024.</p>
<p>Dignity will commission a biodiversity survey of the Cemetery and will implement recommendations to encourage biodiversity at the cemetery by 31st December 2024.</p>
<p>Dignity to explore the feasibility of the installation of lights on site. This would improve accessibility in the autumn and winter months and reduce anti-social behavior on site after hours. In order to further reduce anti-social behavior within the cemetery Dignity will assess the feasibility of installing CCTV by 31st December 2023.</p>
<p>RMBC Bereavement Services will install seating areas around the cemetery in order for people to sit and reflect when visiting a loved one's grave. This will be done in consultation with the cemetery friends' group.</p>

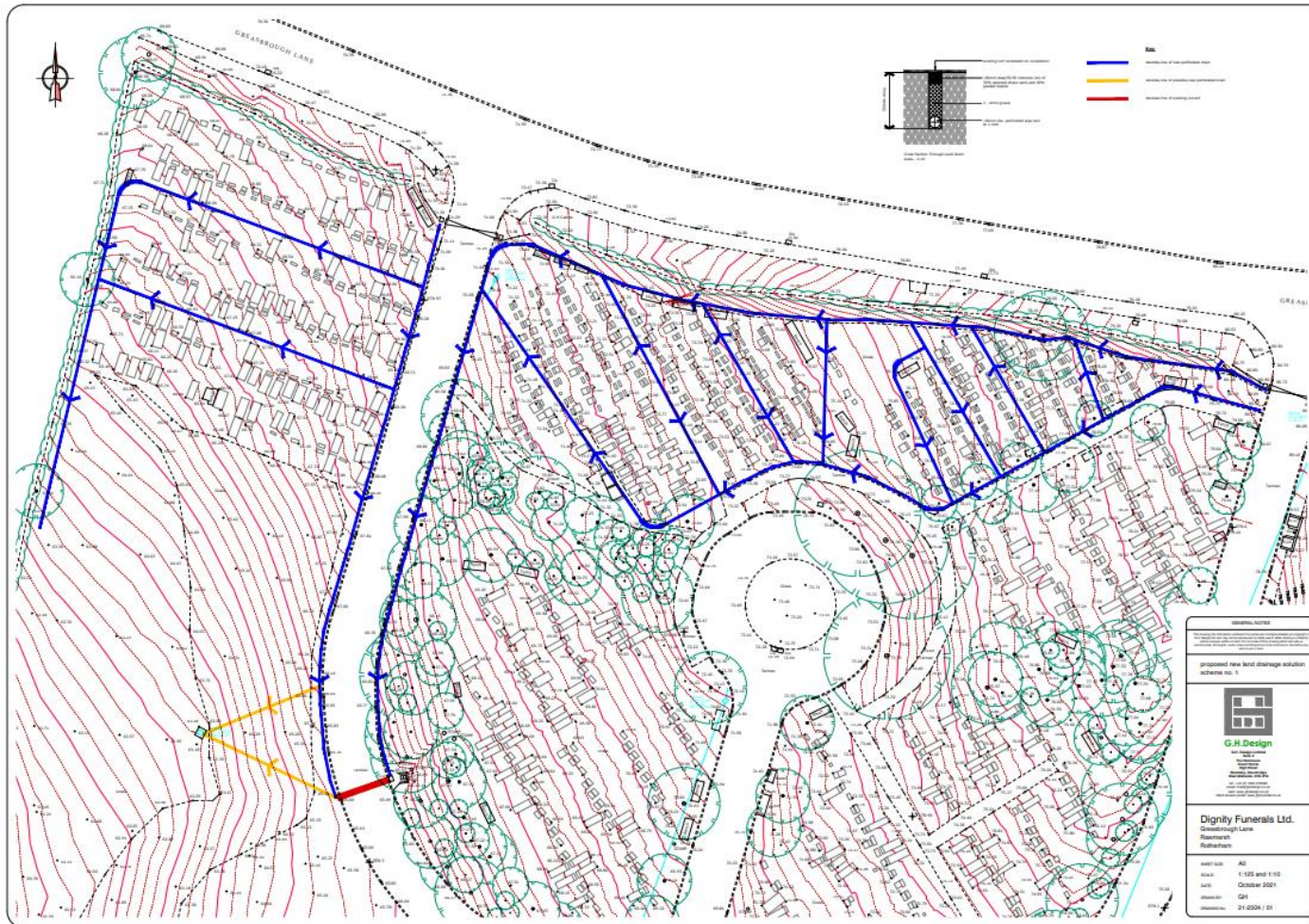
Greasbrough Lane Cemetery, Rawmarsh

Proposed Future Projects 2023-2027

Dignity and Glendale to assess the feasibility of recycling any waste within the cemetery at a local level and produce an appropriate plan for implementation by 31st March 2024.

Dignity to work with Glendale to assess the feasibility of implementing and managing a composting and or spoil area for use by grounds maintenance staff by 31st March 2024.

Greasbrough Lane Cemetery, Rawmarsh – Proposed New Land Drains



Greasbrough Lane Cemetery, Rawmarsh Routine Maintenance 2022-2027

Greasbrough Lane Cemetery							WINTER		SUMMER								WINTER	
Job Description	Quantity	UoM	Unit Rate	Output	Season	Indic Freq	Jan	Feb	Mar	Apr	May	Jun	Jul	Aug	Sep	Oct	Nov	Dec
RIDE ON MOW GRASS AREAS					Summer	16			1	2	2	2	2	2	2	2	1	
STRIM OBSTACLES AND GRASS EDGES					Summer	16			1	2	2	2	2	2	2	2	1	
SWEEP/ BLOW PATHS AND KERBS NEAR GRASSED AREAS					Summer	16			1	2	2	2	2	2	2	2	1	
LEAF CLEARANCE GRASS AREAS					Winter	2	1										1	
APPLY HERBICIDE SPRAY AROUND OBSTACLES					Summer	3			1				1			1		
LIFT LOW BRANCHES UP TO 8FT					Winter	1		1										
REMOVE EPICORMIC GROWTH FROM TREES					Winter	1		1										
CULTIVATE SHRUB BEDS					Winter													
EDGE SHRUB BEDS					Winter													
DEAD HEAD ROSES					All													
SOFT PRUNE ROSES					All													
HARD PRUNE ROSES					All													
PRUNE VARIOUS OTHER SHRUBS					Winter	1		1										
PRUNE INTERNAL HEDGES					All	2			1						1			
APPLY HERBICIDE SPRAY TO SHRUB BEDS AND BORDERS (SPOT SPRAY)					Winter	1		1										
LEAF CLEARANCE FROM SHRUB BEDS					Winter	1		1										
HALF MOON GRASS EDGES					Winter	2	1	1										
APPLY HERBICIDE SPRAY TO BUILDING LINES, PATHS, AND CAR PARKS					All	3			1			1			1			
LEAF CLEARANCE					All	2	1										1	
CLEAR MOSS OFF PATHWAYS USING MOSS BRUSH / CHEMICAL					All	3		1				1					1	
SUPPLY AND PLANT SUMMER BEDDING					All													
SUPPLY AND PLANT WINTER BEDDING					All													
GRIT HEARSE ROUTE AND TOP CAR PARK AS AND WHEN NECESSARY					Winter													
SNOW CLEAR ALL HARDSTAN DING AREAS AS AND WHEN NECESSARY					Winter													

Greasbrough Lane Cemetery, Rawmarsh

Tree Works 2022-2023 - Works all complete
Manage deadwood on trees in the following areas;
B section x 3 ash
D section x3 ash
Cremated Remains section by hedge, ash tree
3 x poplars by roundabout
D section, remove ash by path
C section, reduce cherry limb
By A section near the bench, lift cherry branches
B and C section, lift x 2 cherry trees over drive/path.

Wath Cemetery

In Year Projects 2022-2023

Dignity have undertaken a site survey of the roads and paths within Wath Cemetery. The survey highlighted all areas of the cemetery where resurfacing repairs and improvements are required. The commencement of the work to improve the condition of the roads and footpaths will be scheduled and timescales and dates will be published once these have been established.

Dignity's planning consultants have submitted a pre-application to the Council to expand the cemetery at Wath with a full planning application submitted on 30th September 2022. There will be a public display provided by Dignity around the overall expansion project at Wath.

An additional water tap was installed by Dignity in September 2022.

Dignity will undertake ongoing communications to recruit more members to be involved in the Friends of Wath Cemetery group and support a group in becoming actively involved with the cemetery.

Wath Cemetery

Proposed Future Projects 2023-2027
Dignity will commission a biodiversity survey of the Cemetery and will implement recommendations to encourage biodiversity at the cemetery
Dignity will look to increase security within the cemetery by assessing the heightening of the low boundary walls and fences, installing lighting and the potential for CCTV to be installed. There have been a number of instances of antisocial behavior in the past within Wath Cemetery reported.
Dignity and Glendale to assess the feasibility of recycling any waste within the cemetery at a local level and produce an appropriate plan for implementation by 31 st March 2024.
RMBC Bereavement Services will install seating areas around the cemetery in order for people to sit and reflect when visiting a loved one's grave. This will be done in consultation with the cemetery friends' group.
Dignity will encourage the Wath Friends group to become more pro-active and involved. This will improve the working relationship and encourage cohesive working between all parties through different events and activities undertaken within the cemetery led by Dignity. The aim is for Friends groups to become autonomous eventually.
Dignity to work with Glendale to assess the feasibility of implementing and managing a composting and or spoil area for use by grounds maintenance staff by 31 st March 2024.
Commonwealth war graves to be commemorated as at other cemeteries on key dates such as VE Day and Remembrance Day

Wath Cemetery Routine Maintenance 2022-2027

Wath Cemetery							WINTER		SUMMER								WINTER	
Job Description	Quantity	UoM	Unit Rate	Output	Season	Indic Freq	Jan	Feb	Mar	Apr	May	Jun	Jul	Aug	Sep	Oct	Nov	Dec
RIDE ON MOW GRASS AREAS					Summer	16			1	2	2	2	2	2	2	2	1	
STRIM OBSTACLES AND GRASS EDGES					Summer	16			1	2	2	2	2	2	2	2	1	
SWEEP/ BLOW PATHS AND KERBS NEAR GRASSED AREAS					Summer	16			1	2	2	2	2	2	2	2	1	
LEAF CLEARANCE GRASS AREAS					All	6	1	1	1							1	1	1
APPLY HERBICIDE SPRAY AROUND OBSTACLES					Summer	4			1		1			1		1		
LIFT LOW BRANCHES UP TO 8FT					Winter	1		1										
REMOVE EPICORMIC GROWTH FROM TREES					Winter	1		1										
CULTIVATE SHRUB BEDS					Winter													
EDGE SHRUB BEDS					Winter													
DEAD HEAD ROSES					All													
SOFT PRUNE ROSES					All													
HARD PRUNE ROSES					All													
PRUNE VARIOUS OTHER SHRUBS					Winter													
PRUNE INTERNAL HEDGES					All	2			1						1			
APPLY HERBICIDE SPRAY TO SHRUB BEDS AND BORDERS (SPOT SPRAY)					Winter	1		1										
LEAF CLEARANCE FROM SHRUB BEDS					Winter													
HALF MOON GRASS EDGES					Winter	2	2											
APPLY HERBICIDE SPRAY TO BUILDING LINES, PATHS, AND CAR PARKS					All	3			1			1			1			
LEAF CLEARANCE					All	3	1									1	1	
CLEAR MOSS OFF PATHWAYS USING MOSS BRUSH / CHEMICAL					All	3		1				1					1	
SUPPLY AND PLANT SUMMER BEDDING					All													
SUPPLY AND PLANT WINTER BEDDING					All													
GRIT HEARSE ROUTE AND TOP CAR PARK AS AND WHEN NECESSARY					Winter													
SNOW CLEAR ALL HARDSTAN DING AREAS AS AND WHEN NECESSARY					Winter													

Wath Cemetery

Tree Works 2022-2023 – Work not yet started will be completed by April 2023
Manage deadwood on trees in the following areas;
CC section lime
Q section sycamore
R section x 2 sycamore.
XM section lime tree
CC section remove hanger
QQ section reduce sycamore
TT/SS section sever ivy, x 3 lime and x1 sycamore
KK section remove cherry in poor condition
AA section lift cherry over drive
NNK section remove x 2 by wall (multi sycamore/ Horse chestnut)

Masbrough Cemetery

In Year Projects 2022-2023
<p>Dignity have undertaken a site survey of the roads and paths within Masbrough Cemetery. The survey highlighted all areas of the cemetery where resurfacing repairs and improvements are required. The commencement of the work to improve the condition of the roads and footpaths will be scheduled and timescales and dates will be published once these have been established.</p>
<p>Council to carry out repairs along the Psalters Lane boundary wall. Glendale to clear right up to the wall before work can commence so that contractors can gain appropriate access.</p>
<p>Dignity to engage with established Friends group. The group has been inactive, and Dignity need to be involved and encourage events and activities to take place in partnership with Glendale. Dignity will, as part of this undertaking, continue working with the Council's reparation service who will attend Friends sessions with young offenders.</p>
<p>Dignity and Glendale to devise and document a programme to manage onsite Japanese Knotweed and dispose of correctly.</p>

Masbrough Cemetery

Proposed Future Projects 2023-2027
RMBC Bereavement Services will install seating areas around the cemetery in order for people to sit and reflect when visiting a loved one's grave. This will be done in consultation with the cemetery friends' group.
Dignity will commission a biodiversity survey of the Cemetery and will implement recommendations to encourage biodiversity at the cemetery
RMBC Bereavement Services will continue investigating funding, uses and restoration opportunities for the Cemetery Chapels. The progress on this will be updated annually to the Improving Places Select Committee in the Annual Bereavement Services update report.
Dignity and Glendale to assess the feasibility of recycling any waste within the cemetery at a local level and produce an appropriate plan for implementation by 31 st March 2024.
Dignity to undertake a survey of any available land for burial on site. There is an appetite for this in the local community.
Dignity to consider ways to manage vehicular access to the site. Current issues with parents using the site as a car park during school run hours which can cause access issues for those wishing to visit the cemetery alongside staff.
Dignity to undertake an assessment of whether there are any public graves on site, if so, commission and install a plaque to identify these areas.
Dignity to work with Glendale to assess the feasibility of implementing and managing a composting and or spoil area for use by grounds maintenance staff by 31 st March 2024.
Commonwealth war graves to be commemorated as at other cemeteries on key dates such as VE Day and Remembrance Day

Masbrough Cemetery Routine Maintenance 2022-2027

Masbrough Cemetery							WINTER		SUMMER								WINTER	
Job Description	Quantity	UoM	Unit Rate	Output	Season	Indic Freq	Jan	Feb	Mar	Apr	May	Jun	Jul	Aug	Sep	Oct	Nov	Dec
RIDE ON MOW GRASS AREAS					Summer	16			1	2	2	2	2	2	2	2	1	
STRIM OBSTACLES AND GRASS EDGES					Summer	16			1	2	2	2	2	2	2	2	1	
SWEEP/ BLOW PATHS AND KERBS NEAR GRASSED AREAS					Summer	16			1	2	2	2	2	2	2	2	1	
LEAF CLEARANCE GRASS AREAS					Winter	2	1										1	
APPLY HERBICIDE SPRAY AROUND OBSTACLES					Summer	3			1				1			1		
LIFT LOW BRANCHES UP TO 8FT					Winter	1		1										
REMOVE EPICORMIC GROWTH FROM TREES					Winter	1		1										
CULTIVATE SHRUB BEDS					Winter	1												1
EDGE SHRUB BEDS					Winter	1												1
DEAD HEAD ROSES					All													
SOFT PRUNE ROSES					All													
HARD PRUNE ROSES					All													
PRUNE VARIOUS OTHER SHRUBS					Winter	1												1
PRUNE INTERNAL HEDGES					All	1										1		
APPLY HERBICIDE SPRAY TO SHRUB BEDS AND BORDERS (SPOT SPRAY)					Winter	1												1
LEAF CLEARANCE FROM SHRUB BEDS					Winter	1												1
HALF MOON GRASS EDGES					Winter	2												2
APPLY HERBICIDE SPRAY TO BUILDING LINES, PATHS, AND CAR PARKS					All	3			1			1			1			
LEAF CLEARANCE					All	2											1	1
CLEAR MOSS OFF PATHWAYS USING MOSS BRUSH / CHEMICAL					All	3		1				1					1	
SUPPLY AND PLANT SUMMER BEDDING					All													
SUPPLY AND PLANT WINTER BEDDING					All													
GRIT HEARSE ROUTE AND TOP CAR PARK AS AND WHEN NECESSARY					Winter													
SNOW CLEAR ALL HARDSTAN DING AREAS AS AND WHEN NECESSARY					Winter													

Masbrough Cemetery

Tree Works 2022-2023 - Work not started will be completed by April 2023

Drive section from T to M sections, deadwood over drive.

G section regrowth from path to be removed.

EE section sever Ivy x 7.

Town Lane Cemetery, Greasbrough

In Year Projects 2022-2023

Dignity have undertaken a site survey of the roads and paths within Town Lane Cemetery. The survey highlighted all areas of the cemetery where resurfacing repairs and improvements are required. The commencement of the work to improve the condition of the roads and footpaths will be scheduled and timescales and dates will be published once these have been established.

Dignity to work towards establishing a Friend's group for this cemetery. This will be done through community engagement activities and Dignity will, as part of this undertaking, work with the Council's reparation service who currently attend other established Friends sessions with young offenders.

Town Lane Cemetery, Greasbrough

Proposed Future Projects 2023-2027
RMBC Bereavement Services will install seating areas around the cemetery in order for people to sit and reflect when visiting a loved one's grave.
Dignity will commission a biodiversity survey of the Cemetery and will implement recommendations to encourage biodiversity at the cemetery
RMBC Bereavement Services will continue investigating funding, uses and restoration opportunities for the Cemetery Chapels. The progress on this will be updated annually to the Improving Places Select Committee in the Annual Bereavement Services update report.
Dignity and Glendale to assess the feasibility of recycling any waste within the cemetery at a local level and produce an appropriate plan for implementation by 31 st March 2024.
Dignity to undertake a survey of any available land for burial on site and report this to the Council.
Commonwealth war graves to be commemorated as at other cemeteries on key dates such as VE Day and Remembrance Day
Dignity to work with Glendale to assess the feasibility of implementing and managing a composting and or spoil area for use by grounds maintenance staff by 31 st March 2024.

Town Lane Cemetery, Greasbrough Routine Maintenance 2022-2027

Greasbrough Cemetery							WINTER		SUMMER								WINTER	
Job Description	Quantity	UoM	Unit Rate	Output	Season	Indic Freq	Jan	Feb	Mar	Apr	May	Jun	Jul	Aug	Sep	Oct	Nov	Dec
RIDE ON MOW GRASS AREAS					Summer	16			1	2	2	2	2	2	2	2	1	
STRIM OBSTACLES AND GRASS EDGES					Summer	16			1	2	2	2	2	2	2	2	1	
SWEEP/ BLOW PATHS AND KERBS NEAR GRASSED AREAS					Summer	16			1	2	2	2	2	2	2	2	1	
LEAF CLEARANCE GRASS AREAS					All	4	1	1									1	1
APPLY HERBICIDE SPRAY AROUND OBSTACLES					Summer	3			1				1			1		
LIFT LOW BRANCHES UP TO 8FT					Winter	1		1										
REMOVE EPICORMIC GROWTH FROM TREES					Winter	1		1										
CULTIVATE SHRUB BEDS					Winter	1		1										
EDGE SHRUB BEDS					Winter													
DEAD HEAD ROSES					All													
SOFT PRUNE ROSES					All													
HARD PRUNE ROSES					All													
PRUNE VARIOUS OTHER SHRUBS					Winter	1		1										
PRUNE INTERNAL HEDGES					All	2				1					1			
APPLY HERBICIDE SPRAY TO SHRUB BEDS AND BORDERS (SPOT SPRAY)					Winter	1		1										
LEAF CLEARANCE FROM SHRUB BEDS					Winter	1		1										
HALF MOON GRASS EDGES					Winter	2	1											1
APPLY HERBICIDE SPRAY TO BUILDING LINES, PATHS, AND CAR PARKS					All	3			1			1			1			
LEAF CLEARANCE					All	2										1	1	
CLEAR MOSS OFF PATHWAYS USING MOSS BRUSH / CHEMICAL					All	3		1				1					1	
SUPPLY AND PLANT SUMMER BEDDING					All													
SUPPLY AND PLANT WINTER BEDDING					All													
GRIT HEARSE ROUTE AND TOP CAR PARK AS AND WHEN NECESSARY					Winter													
SNOW CLEAR ALL HARDSTAN DING AREAS AS AND WHEN NECESSARY					Winter													

Town Lane Cemetery, Greasbrough

Tree Works 2022-2023 – Work not started will be complete by April 2023

I section remove large poplar with roots protruding

Grind down 5 x cherry stumps on main drive up to chapel

J section remove large poplar with bark rust mid boundary

I/J section grind protruding roots from path end area and soil seed/tarmac.

J section x 5 poplars remove with protruding roots.

High Street Cemetery, Rawmarsh

In Year Projects 2022-2023
<p>Glendale to cut and maintain a number of green pathways through the centre of the site. Glendale to uncover cobbled pathways and cart tracks at each side and cut undergrowth one metre beyond this on each side.</p>
<p>Front entrance area to be well maintained. Rows of graves next to church to be kept in good order and overgrowth removed. Other graves in this area need uncovering and maintaining down to the access road and gates to the rear of the church.</p>
<p>Biodiversity to be respected by leaving the rest of the site to nature. One big cut can be undertaken during the winter months and all materials removed from site or composting areas established.</p>
<p>RMBC Bereavement Services to remove all ivy from wall along boundary with church graveyard adjacent and rebuild in many places where danger of collapse is present.</p> <p>All overgrowth to be removed from retaining wall at the bottom of the cemetery. Repair works will take place to make this wall safe, a fence will be installed along the top of the wall to prevent falls from height from the boundary line. Well-worn path nearby will be reseeded, and a new path installed to deter people away from the edge.</p>

High Street Cemetery, Rawmarsh

Proposed Future Projects 2023-2027
Dignity will commission a biodiversity survey of the Cemetery and will implement recommendations to encourage biodiversity at the cemetery
Dignity and Glendale will oversee the creation of a “nature reserve area” in the central section of the site. Work with Council biodiversity officers and local interested nature groups. Information boards showing types of birds, insects and mammals that frequent the area at different times of the year to be put in place.
RMBC Bereavement Services will install seating areas around the cemetery in order for people to sit and reflect when visiting a loved one's grave, or to enjoy the wealth of nature present. This will be done in consultation with the cemetery friends' group.
Dignity will work in collaboration with the friend's group and local historians to establish a history trail, including permanent markers at certain historically interesting graves, an interactive map (internet based with QR codes to descriptions). This could be adapted and changed for different events including celebrations for the Parkgate 200 anniversary.
Dignity will reinstate the fence in the entrance area between the cemetery and access drive to the allotments. This is to prevent people using as a turning circle. This is churning up the ground. Dignity to consider tarmac being installed in this area which is used for cemetery parking also to create a more stable ground surface and improve facilities.
Dignity to work with Glendale to assess the feasibility of implementing and managing a composting and or spoil area for use by grounds maintenance staff by 31 st March 2024.
Commonwealth war graves to be commemorated as at other cemeteries on key dates such as VE Day and Remembrance Day
Dignity and Glendale to assess the feasibility of recycling any waste within the cemetery at a local level and produce an appropriate plan for implementation by 31 st March 2024.

High Street Cemetery, Rawmarsh Routine Maintenance 2022-2027

High Street Cemetery																			
Job Description	Quantity	UoM	Unit Rate	Output	Season	Indic Freq	WINTER		SUMMER								WINTER		Comments
							Jan	Feb	Mar	Apr	May	Jun	Jul	Aug	Sep	Oct	Nov	Dec	
RIDE ON MOW GRASS AREAS (FULL SITE CUT)					Summer	1											1		
RIDE ON MOW GRASS PATH AREAS					Summer	4			1		1			1			1		
STRIM OBSTACLES AND GRASS EDGES					All	5			1		1			1			1		
SWEEP/ BLOW PATHS AND KERBS NEAR GRASSED AREAS					All	5			1		1			1			1		
LEAF CLEARANCE					Winter	1		1											
HALF MOON GRASS EDGES					Winter	1												1	
CLEAR MOSS OFF PATHWAYS USING MECHANICAL BRUSH					Winter	1		1											
MANAGE GROWTH ON PERIMETERS					All	2		1									1		
LIFT LOW BRANCHES UP TO 8FT						WHEN REQUIRED													
REMOVE EPICORMIC GROWTH FROM TREES						WHEN REQUIRED													
APPLY HERBICIDE SPRAY AROUND OBSTACLES						0													
APPLY HERBICIDE SPRAY TO BUILDING LINES, PATHS, AND CAR PARKS						0													

High Street Cemetery, Rawmarsh

Tree Works 2022-2023 - Work not started will be complete by April 2023

Dignity and Glendale to work with the allotment association to remove overhanging self-sets on the allotment boundary and returning the overgrowth to a managed hedgerow. This overgrowth casts lots of shade onto the allotment plots. This will then be regularly maintained through the routine maintenance plan.

No other individual tree works have been identified within the cemetery for 2022/23 but through the work being carried out by Glendale, Dignity will ensure a full survey of the site is undertaken and all tree works identified by the end of October 2022. In the interim, any tree works identified as needing to be completed by the maintenance team, will be carried out by the tree team accordingly

Tree canopies to be raised along the main paths and overhanging shrubs cut back.

Ad Hoc Maintenance – Dignity & Glendale

- Repairing and replacing water taps in cemeteries
- Removal of green waste from the friends' groups
- Removal of fly tipping within the cemeteries
- Repair fencing and gates as and when required
- Transport heavy memorial benches to different sites
- Removal of tributes from graves when needed
- Re-paint gates and railings as and when required
- Decorate the Cenotaph at Moorgate for Remembrance Day
- Decorate cemetery gates for Eid Mubarak, VE Day, and Armed Forces Day
- Undertake emergency tree works within 24 hours when required

Friends Groups

- Successful cemetery Friends groups are in existence all over the country and Dignity are keen to encourage active groups across Rotherham.
- Dignity will be actively seeking enthusiastic volunteers to be involved in different activities and events within the Rotherham Cemeteries, to focus on particular cemetery areas, create bug hotels, bird boxes, bat boxes and hedgehog hotels to encourage biodiversity in the cemeteries. The friends' groups alongside local historians will be instrumental in identifying historically significant persons within the cemeteries which will encourage local interest in how important our cemeteries are.
- Regular meetings and events are to be held with the involvement of Dignity and Glendale.
- RMBC Bereavement Services have devised a Friends group guidebook which will be reviewed periodically and shared with all existing and potential groups.

Bereavement Services

Rotherham Crematorium Cremation service times:

Direct Cremations: Mon – Fri – 8.00am – 8.30am

All Cremations: Mon – Fri – 9.00am – 6.30pm

Saturday times available on request

Book of Remembrance – Monday – Friday – 9.00am – 4.15pm

Saturday, Sunday, and Bank Holidays – 10.00am – 4.00pm

Appointments available to view alternative dates

Rotherham Cemeteries include:

East Herringthorpe Cemetery – open site for interments

Maltby Cemetery – open site for interments

Moorgate Cemetery – open site for interments

Haugh Road Cemetery – open site for interments

Greasbrough Lane Cemetery – open site for interments

Wath Cemetery – open site for interments

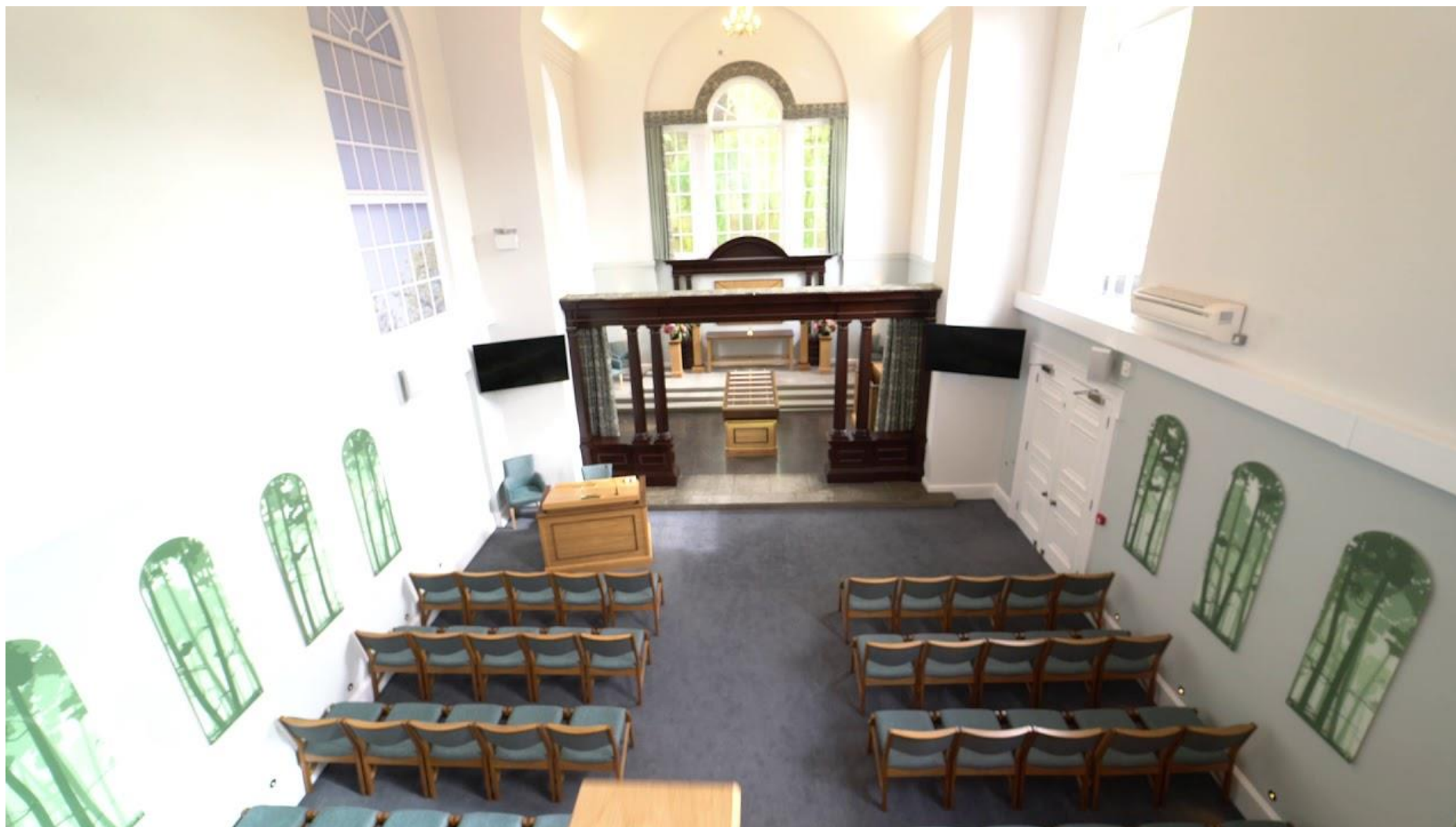
Masbrough Cemetery – open site for interments

Greasbrough Cemetery – open site for interments

High Street Cemetery – closed site for interments

Bereavement Services

We want to provide a place of peace and tranquillity where mourners can remember and say goodbye to loved ones, as well as provide a range of special and unique memorial options.



Useful Contacts

Rotherham Crematorium & Cemeteries
Business Leader

01709 850344
Clare Chisholm

rotherham.crematorium@thecmg.co.uk

www.rotherhamcrematorium.co.uk

Rotherham Metropolitan Borough Council
Superintendent Registrar & Bereavement Services Manager
Assistant Bereavement Services Manager

01709 382121
Ashleigh Wilford
Chris Willis

THANK YOU

4 King Edwards Court
King Edward Square
Sutton Coldfield
B73 6AP

t +44 (0)121 354 1557
e info@dignityuk.co.uk